

ALG 2 : Chapter 2 Summary - Answer Key

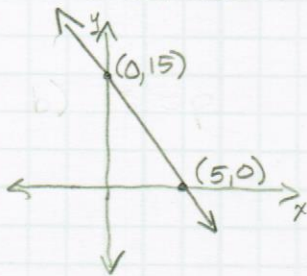
1) a) -11 b) $g(4) = -68$; $g(-2) = -2$

2) $y = \frac{11}{2}x$

3) a) slope: -3 slope-intercept form: $y = -3x + 15$

point-slope form: $y - 6 = -3(x - 3)$ or $y - 9 = -3(x - 2)$

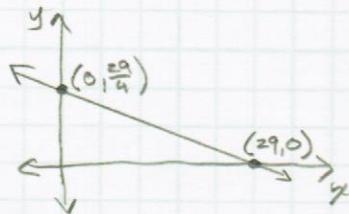
standard form: $3x + y = 15$ x-intercept: $(5, 0)$
y-intercept: $(0, 15)$



b) slope: $-\frac{1}{4}$ slope-intercept form: $y = -\frac{1}{4}x + \frac{29}{4}$

point-slope form: $y - 8 = -\frac{1}{4}(x + 3)$ or $y - 9 = -\frac{1}{4}(x + 7)$

standard form: $x + 4y = 29$ x-intercept: $(29, 0)$
y-intercept: $(0, \frac{29}{4})$



c) slope: 0 slope-intercept form: $y = 6$

point-slope form: $y - 6 = 0(x + 3)$ or $y - 6 = 0(x - 5)$

standard form: $y = 6$ x-intercept: none
y-intercept: $(0, 6)$

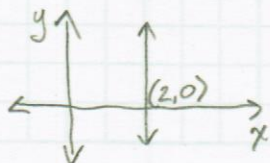


d) slope: undefined slope-intercept form: none

point-slope form: none

standard form: $x = 2$

x-intercept: $(2, 0)$
y-intercept: none

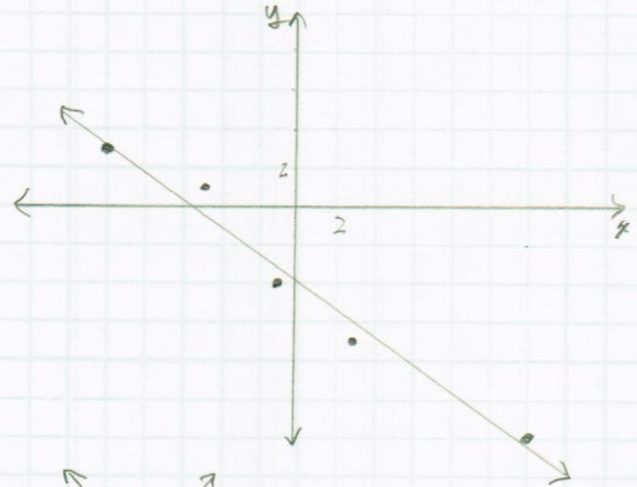


4) slope: $-\frac{4}{3}$ point-slope form: $y+6 = -\frac{4}{3}(x-3)$

slope-intercept form: $y = -\frac{4}{3}x - 2$

Standard form: $4x + 3y = -6$

5)

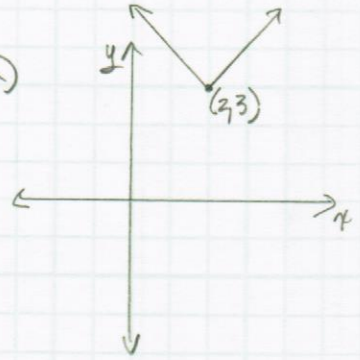


A line of best fit might be

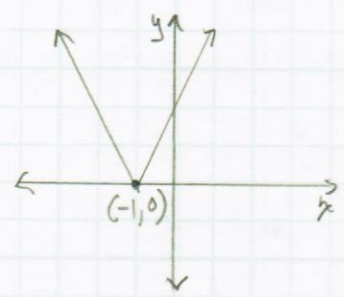
$y = -\frac{2}{3}x - 4$

or something close to that

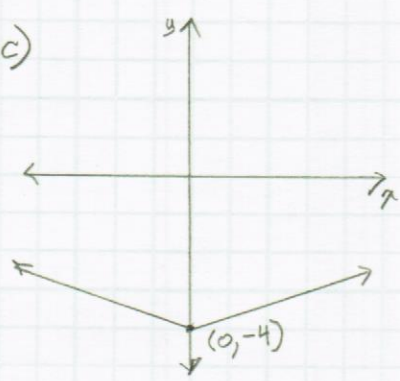
6) a)



b)



c)



d)

